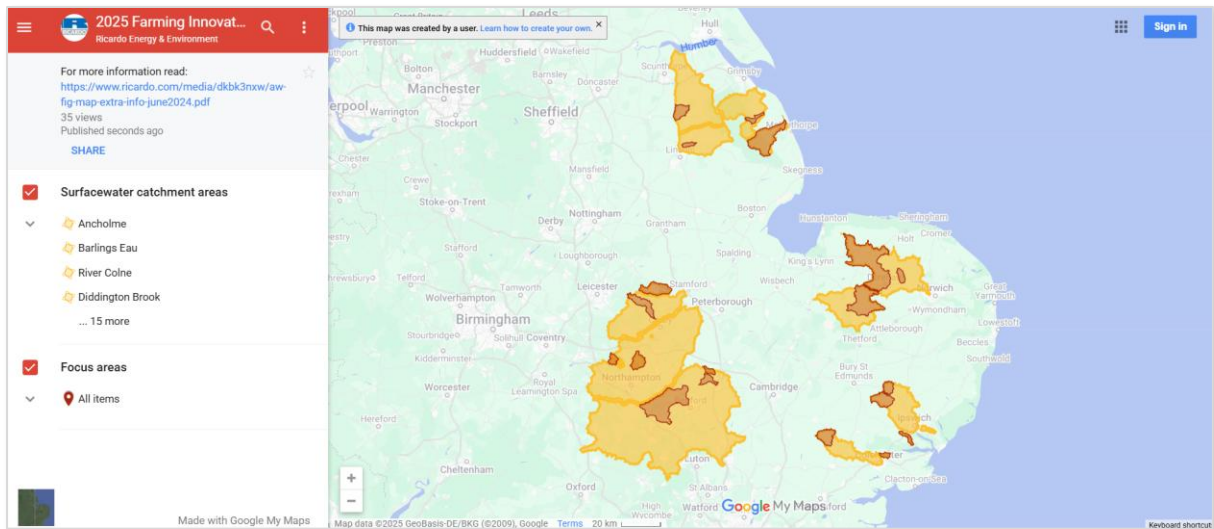


Anglian Water Farming Innovation Grant

Drinking water protected areas

This interactive map shows drinking water protected areas where Anglian Water undertake Catchment Management to reduce risks to raw water quality.



Areas in yellow are surfacewater catchment areas

Click on each area in the map to find out the local raw water challenges.

Areas in red/orange are focus areas

Applications from within these areas are more likely to be successful.

Data is provided for the purposes of the [Farm Innovation Grant 25/26](#) only. Data will be reviewed for each round of grant funding and this will include focus area locations.

Should you have any queries on this map or data contact

CatchmentManagement@anglianwater.co.uk